



**Hydrotech**  
Sales Service & Projects



**Hydrotech**

## About

# Hydrotech

**Hydrotech** is involved in the design and manufacture of water and wastewater treatment systems. We started very small, with one man and a mission to be proficient in our field. Today, we are proud having served the Nation with Technology, Products and Services. This was through the combination of our design and engineering skills, our own manufacturing and fabrication facilities, careful selection of our supply partners and commitment from our people. We concentrated and kept our focus on most challenging assignments and have pleasure today to have the largest market share in supply of Water and Waste Water Treatment Plants like ETP, STP, UF, NF, MF, RO, REUSE & RECYCAL, RECOVERY System, Mineral water treatment plant, Demineralization, EDI, Swimming pool filtration and Condensate polishing Systems to Industries, where the quality and performance expectations are a challenge.

Our aim is to provide high quality of machinery with new state of art technology to our client. DET always believe in excellence and innovation in technology.

## Our Aim

We aim to become the most preferred partner of quality conscious organizations in implementing water treatment solutions of any kind in the world.

## Our Mission

We are committed to ushering a era of water abundance by deploying state-of-the-art solutions at affordable cost.

## Values

**Integrity:** We are honest with other and ourselves. We meet the highest professional standards in all our business dealing. We do what we say.

**Responsibility:** We accept responsibility towards our stakeholders, customers, partners and the environment, holding ourselves accountable for our work and our actions.

**Teamwork:** We have employees from different culture and backgrounds and with different point of views. We contribute as individuals and succeed in unity by sharing and building on knowledge and opinions that deliver results. We also believe in brainstorming.

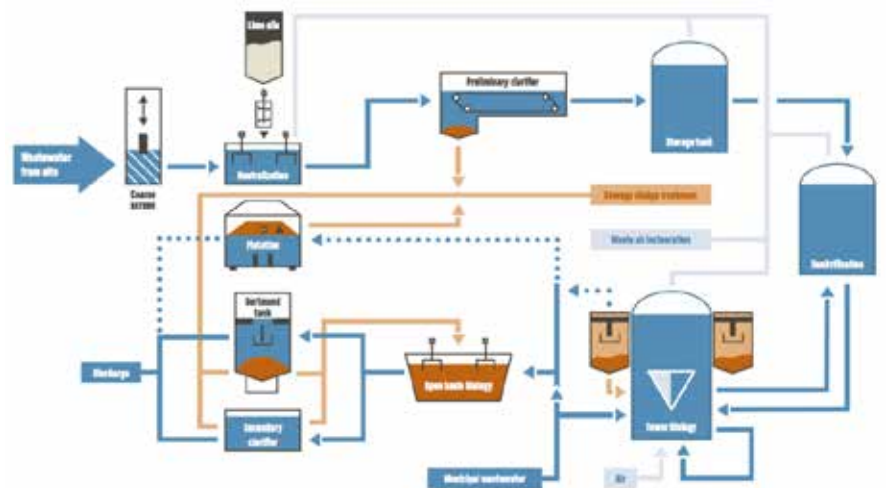
# Effluent Treatment Plant (ETP)

Hydrotech Effluent Water Treatment Plant for various types of waste water and effluents to remove suspended solids, organic, inorganic, heavy metals, oil and grease & suspended solids. It is made at our facility according to the prevailing industrial standards. Also our team of inspectors conducts quality check on various parameters to be sure at our end, before delivering the product. Effluent Water Treatment Plant is offered at cost-effective prices.



## Effluent Treatment Process

- Ultra Filtration
- Nano Filtration
- Reverse Osmosis
- Membrane Bio Reactors
- TDS Reduction
- TOC Removal
- Sludge Thickeners
- Sludge Digesters
- Conventional Sludge Drying Beds
- Manual and Automatic Filter Press
- Centrifuges
- Sludge Stabilization by Composting
- Conventional Solar Evaporation Systems
- Accelerated Spray Type Evaporation System
- Mechanical System
- Root Transpiration Beds
- Vermicomposting

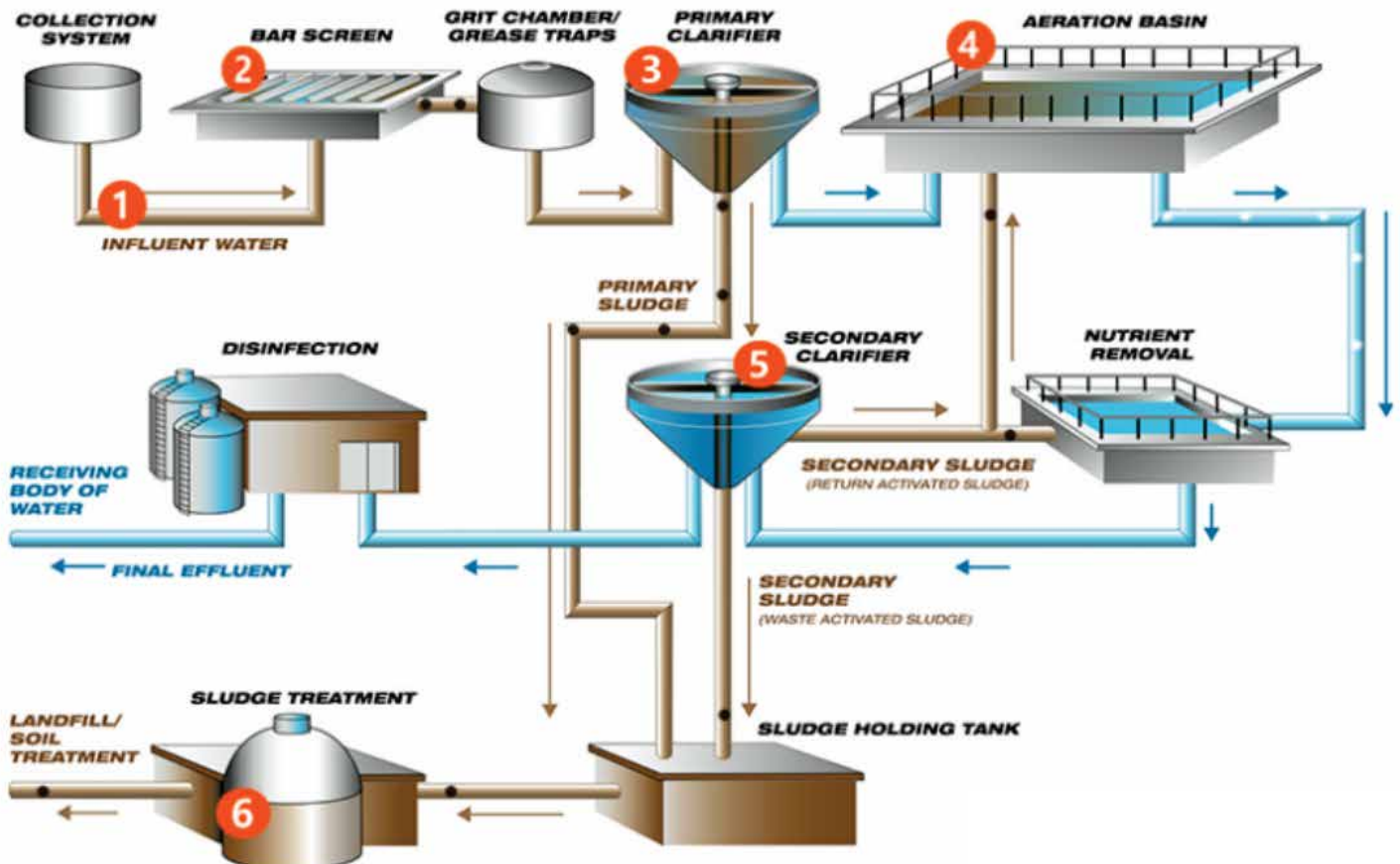


# Sewage Treatment Plant (STP)

Hydrotech Sewage Treatment Plant used to treat sewage created by Hostels, Industries, Hospitals, Colonies, IT Parks and commercial Buildings etc. We Manufacture and assure usage of qualitative materials in fabricating Sewage Treatment Plant up to industrial standards. It is easy to install & Operate, and requires low maintenance cost. It helps providing the society with a clean healthy environment around them. It can be availed at feasible prices.

## Sewage Treatment Process

- Compact Sewage Treatment Plants
- Custom Built Sewage Treatment Units
- Bio Pack Media Based Treatment Plants
- UASB Based Sewage Treatment Plants
- FBFR / SBBR Based Sewage Treatment Plants
- Sullage Treatment Units
- Membrane Bio Reactor
- Rotating Biological Contractor - STP
- Manual Bar Screens
- Automatic Bar Screens
- Floating Oil Skimmers
- Belt Type Oil Skimmers
- Fat & Grease Traps
- pH Controllers
- Coarse Bubble Diffusers



# RO (Reverse Osmosis) Plant

- **Raw Water Pump**

To generate the pressure for down the line system.

- **Pressure Sand Filter (PSF)**

The water is first filtered by Pressure sand filter Unit for removal of suspended matters and turbidity.

- **Activated Carbon Filter (ACF)**

To remove color, Odour. Chlorine, Oil & Grease from the raw water.

- **Micron Cartridge Filter (MCF)**

These are Pressure Vessels Fitted internally with spun or pleated cartridge element which removes micron sized particles.

- **Antiscalant Dosing System**

To Prevent membrane from scaling (hardness).

- **High Pressure Pump**

A high pressure pump is provided for supplying the feed water to RO System at high pressure of 10-12 kg/cm<sup>2</sup>.

- **Desalination System By RO Membrane Element**

A Reverse Osmosis System rejects 90-95% of Total Dissolved Solids (TDS).

- **Storage Of Treated (Pure) water**

To store Treated (pure) water in tank.

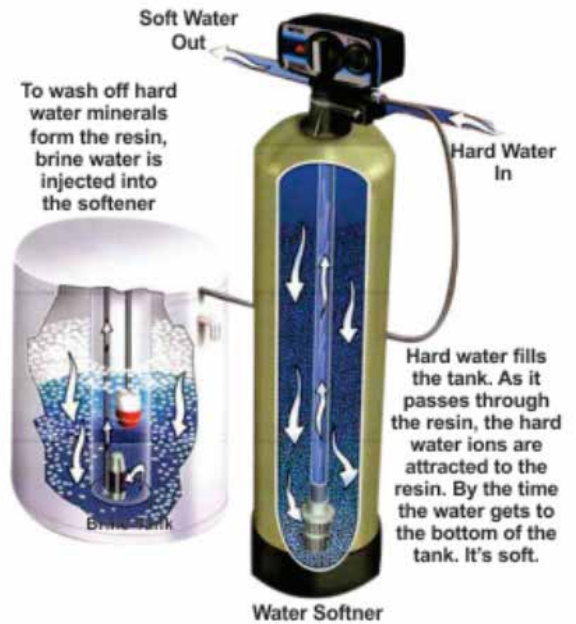


# Water Softening Plant

Softening plant is designed to remove calcium and magnesium ions which cause the hardness of water. The hardness in raw water gets exchanged with sodium ions in the sodium based cationic resin bed, thus giving real soft water.

Softening plant is available in Manual as well as PLC based control system with Fully Automatic option. It is available in FRP/ MSRL models.

Softening plants is designed to cater to the requirement of scale prevention of Utility / Plumbing Fixtures from Total Hardness. Softners are available for Bungalow / Institutional / Industrial applications.



# Demineralization System (DM/MB Plant)

Hydrotech Demineralizers removes all cations and anions from water.

Hydrotech Demineralizers consists of acid / alkali proof pressure vessel with internal fittings and initial change of cation and anion exchanger. A set of regeneration equipment, hydraulic ejectors, acid and alkali tanks, conductivity meter provides pure total dissolved salts free water which is required at power projects, pharmaceutical sector, Battery water, Electronic industry, Textile / Process water applications.



# Swimming Pool Filter System

The Series of Sand filters provide clean and clear water for commercial user. They produce more filtered water with less energy use. The fiberglass winding design enables the filter to be durable. deforming-proof and corrosion resistant design. We also provide complete swimming pool Turnkey project, with all required accessories.



# Ultrafiltration Plant (UF Plant)



**Operation:** Semi / Fully Automating Self encapsulated hollow fiber ultrafiltration membrane module (inside-out)

**Operating mode:** Dead - end or cross flow, Back washable

**Module Mounting:** Vertical

**Nominal membrane pore size:** 0.02 micron

**Membrane Material:** Hydrophilic PES

**Housing Material:** UPVC

**End cap material:** GRP

**Nozzles size:** 2" Victolic

# Nano Filtration Plant (NF Plant)

## Application:

- pharmaceuticals
- industries
- chemical industries,
- hospitals
- fertilizers
- swimming pool
- bio-technology lab
- sminearl water plant



# Electrodeionization (EDI)

Electrodeionization is a water treatment technology that utilizes electricity, ion exchange membranes and resin to deionizewater and separate dissolved ions (impurities) from water. It differs from other water purification technologies in that it is done without the use of chemical treatments and is usually a polishing treatment to reverse osmosis (RO).

## Application:

1. Electronics
2. Pharmaceuticals
3. Power generation.



# Ultra Violet System (UV System)

## Application:

- 1.pharmaceutical industry
- 2.chemical industry
- 3.hospitals
- 4.fertilizers
- 5.biotechnology lab
- 6.swimming pool



# Turnkey Based Packadge Drinking Mineral Water Project





# Lab & Equipment

## Waste Water :

Characteristics of Polluted water (Domestic Sewage or Industrial Waster) before treatment or after treatment. See environmental chemistry and water quality indicators.

## "Raw Water" Quality :

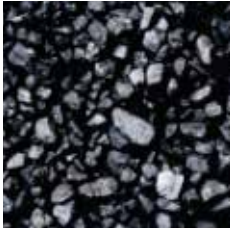
Characteristics of a water source prior to treatment for domestic consumption (Drinking water). See bacteriological water analysis and specific test such as turbidity and hard water.

## "Finished Water" Quality :

Water treated at a municipal water purification. See bacteriological water analysis and category: Water Quality Indicators.



# A Complete Range of Water Treatment Spares



**Carbon**



**Media**



**Flocculation  
Chemical**



**Resin**



**MBBR Media**



**Membrane  
Housing**



**Manual Multiport  
Valve**



**Pressure  
Gauge**



**SS Water  
Storage Tank**



**SS MCF  
Housing**



**Water  
Chiller**



**Ozonator**



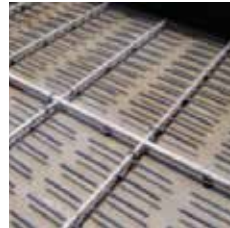
**Oxygen Booster  
Pump**



**Blower**



**Agitator**



**Air Diffusers**



**Bag Filter**



**Bar Screen**



**PHE**



**Filter Press**



**Compressor**



**Dosing Chemical**



**Coagulation  
Chemical**



**Dosing Pump**



**Digital MPV**



**All types of  
Pump**



**Membrane**



**Panel**



**Vessel**



**Pressure  
Switch**



**Rotameter**



**Microne Cartridge  
Filter**



**TDS, pH,  
Conductivity  
Meter**



**Hydrotech**

Sales Service & Projects

- **Turnkey Projects - ETP, STP, WTP**
- **ETP / STP - Operation & Maintenance**
- **Brine Recovery System (BRS)**
- **Mineral Water Treatment Plant**
- **Water Softening Plant**
- **Zero Liquid Discharge (ZLD)**
- **DM (Demineralization) Plants**
- **Cooling Tower Plant**
- **Water & Waste Water Chemicals**
- **Water Heating Systems - KeHems Heat Pump**
- **Pressure Booster System**
- **Pumping Solutions & Systems - Wilo / Kirloskar**
- **DG Set - Crompton Greaves / Supernova**
- **All Type of Water Solution**

# Our Clients



Office: 308, Business Island, Nipania Indore MP 452010

Contact: +91 97379-96006 Email: [hydrotechprojects.sales@gmail.com](mailto:hydrotechprojects.sales@gmail.com)

Web: [www.hydrotechprojects.com](http://www.hydrotechprojects.com)